

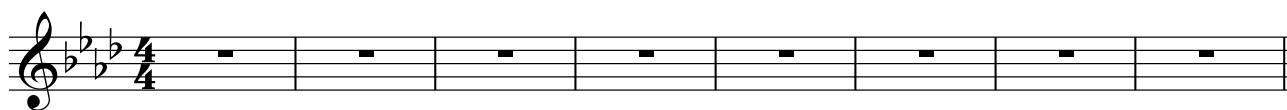
Vocal

Bulldog Anthem

(from 'Carol and Tuesday')

OG Bulldog
(Vo. Kazuma Kudo), YUC'e

♩ = 74



9

Glo-ri - a in ex-cel - sis De - o Et in ter-ra pax ho-mi-ni-bus bo-nae vo-lun-ta - tis

A musical staff starting at measure 9. It features a quarter rest followed by eighth notes, a triplet of eighth notes, and more eighth notes. The lyrics are written below the staff.

11

Glo-ri - a in ex-cel - sis De - o Et in ter-ra pax ho-mi-ni-bus bo-nae vo-lun-ta - tis

A musical staff starting at measure 11. It continues the melody from the previous staff, including a triplet of eighth notes. The lyrics are written below the staff.

13

La-u-da-mus te, be-ne-di - ci-mus te. A-do - ra-mus te, glo-ri - fi - ca - mus te

A musical staff starting at measure 13. It features a quarter rest followed by eighth notes, a triplet of eighth notes, and more eighth notes. The lyrics are written below the staff.

15

Gra - ti - as a - gi-mus ti - bi prop-ter mag-nam glo - ri-am tu - am Do - mi-

A musical staff starting at measure 15. It features a triplet of eighth notes, eighth notes, and a quarter note. The lyrics are written below the staff.

17

ne De - us, Rex cae - le - stis De-us Pa-ter_ om-ni -

A musical staff starting at measure 17. It features quarter notes, a quarter rest, eighth notes, and a quarter note. The lyrics are written below the staff.

22

po - tens, Do - mi - ne Fi - li un - ig - en - te

A musical staff starting at measure 22. It features quarter notes, eighth notes, and a quarter note. The lyrics are written below the staff.

25

Quitol - lis pec - ca - ta mun - di, mi - se - re - re mi - se - re - re

A musical staff starting at measure 25. It features a triplet of eighth notes, eighth notes, and a quarter note. The lyrics are written below the staff.