

Vocal

If I Were a Rich Man

from "Fiddler on the Roof"

Chaim Topol, Jerry Bock, Sheldon Harnick

♩ = 68



If I were a rich man Ya ba dib-ba dib-ba dib-ba dib-ba dib-ba dum



All day long I'd bid-dy bid-dy bum If I were a wealthy man I



wouldn't have to work hard Ya ba dib-ba dib-ba dib-ba dib-ba dib-ba dum



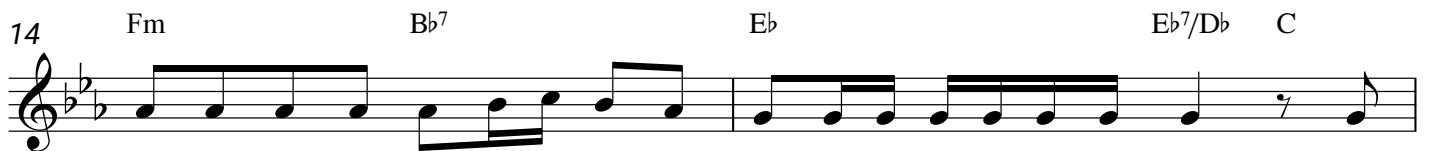
If I were a bid-dy bid-dy rich Idle-didle-didle-didle man I'd build a



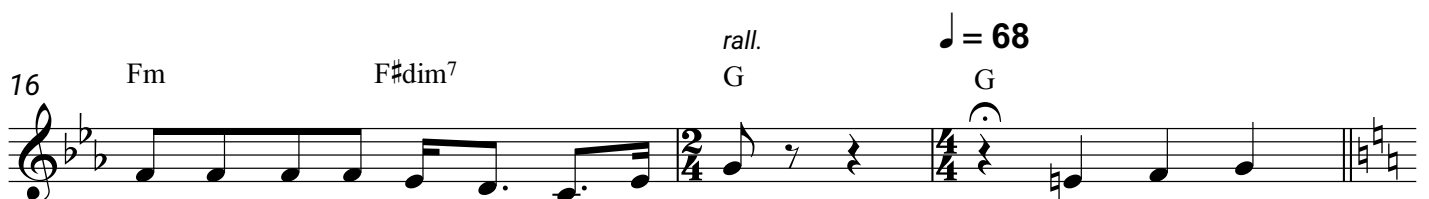
big tall house with rooms by the dozen Right in the middle of the town A



fine tin roof with real wooden floors below There would be



one long staircase just going up And one even longer coming down And



one more leading nowhere, just for show I'd fill my