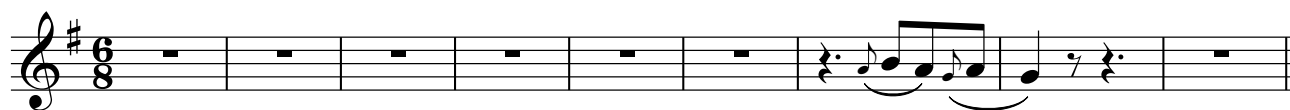


Blessed

Thomas Rhett

♩ = 87



M - m.____

10



The lights are down, but you're shi-nin'

Like you al-ways do__

14



E-very day, I'm re-min-ded

Of the mi-rac-le of you__

18



You're too good for co - in - ci - dence

And too per-fect for an ac - ci - dent__

22



And I'm not sure where Hea - ven is_____

24



But e - very night, I get a glimpse. And know I'm

26



blessed

Wat-ching you spin in that dress

Makin' my heart beat out my

30



chest__

I can't count the times I've heard

Peo-ple say I'm lu-cky, but